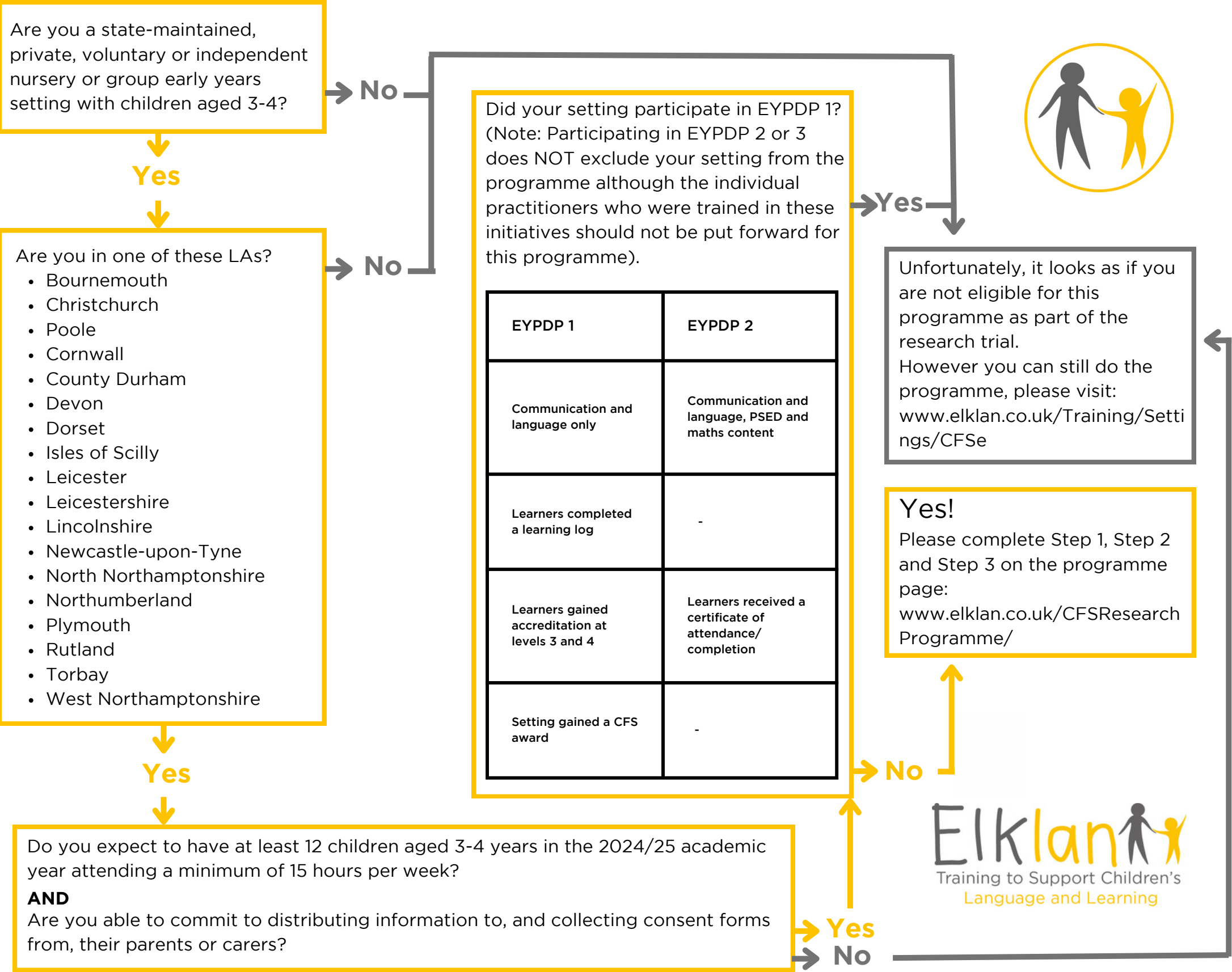


# Are we eligible to take part in the Communication Friendly Setting Research?



Some areas will be recruiting for subsidised places on the CFS programme once all the research places have been filled. Should you be from one of these areas and do not get a place on the research programme we will automatically contact you about the possibility of taking up a subsidised place. However, if you are offered a place as part of the CFS Research you will not be able to transfer to a subsidised place at your request. Unlike the research settings, subsidised ones do NOT benefit from backfill or incentive payments.